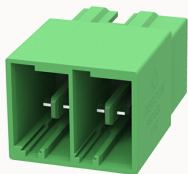


Overview

Product information



5EDGRL-7.62-10020003450

Pluggable Terminal Blocks, Rated current: 41A, Rated voltage (III/2) : 630V, Pitch: 7.62mm, Color: Green, Contact surface: Tin

Product advantages

- ☑ Universal installation method to ensure a high degree of flexibility in device design.
- ☑ The plug direction is parallel to the PCB.

Product certification



Technical data

Product drawing

3D model

□

Electrical parameters UL

Rated voltage (B)	42A
-------------------	-----

Rated voltage (C)	42A
-------------------	-----

Processing notes

Process	Wave soldering/manual soldering
---------	---------------------------------

Electrical parameters UL

Rated voltage (B)	300V
-------------------	------

Rated voltage (C)	300V
-------------------	------

Rated voltage (D)	600V
-------------------	------

Rated current (D)	5A
-------------------	----

Electrical parameters IEC

Rated voltage	630V
Rated voltage(III/3)	500V
Rated current	41A
Rated voltage(III/2)	630V
Rated voltage(II/2)	1000V
Rated surge voltage(III/3)	6KV
Rated surge voltage(III/2)	6KV
Rated surge voltage(II/2)	6KV

Item properties

Connection direction	0°
Type of installation	PCB welding
Pin arrangement	Three rows in a straight line
Pitch	7.62mm
Number of potentials	2
Pluggable or not	Yes
Number of rows	1

Material data

Environmental items	Compliant with REACH/RoHS
Contact material	copper
Contact point metal surface	tin-plated
Contact zone metal surface	tin-plated
Insulation Materials	PBT
Insulating material group	IIIb
Flammability rating	UL94V-0

Mechanical tests

Test Specification

IEC61984/ UL1059

Environmental data

Ambient temperature (operation)

-40°C~105°C(depending on derating curve)

Accessories

Tool

Screwdriver

/

Operating tool

/

Accessories

Coding strip

2EDG-PWI

Bridge

/

Marking strip

/

Others

/

Business data

Order number

10020003450

Packing unit

336

Minimum order quantity

Products weight (without
packaging)

5.85