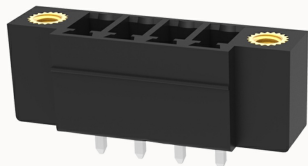


## Overview

### Product information



**15EDGVM-THR-3.81-10030004197**

Pluggable Terminal Blocks nominal current 8A. Rated voltage (II/2): 250V, pitch: 3.81mm, Color: black, Contact surface: Tin

### Product advantages

- ☒ Suitable for SMT welding process
- ☒ The plug direction is perpendicular to PCB, Can meet the needs of different connectors

### Product certification



## Technical data

### Product drawing

### 3D model

□

### Processing notes

Process

Wave soldering/manual soldering

### Electrical parameters UL

Rated voltage (B)

300V

Rated current (B)

8A

### Electrical parameters IEC

Rated voltage

250V

Rated current

8A

Rated voltage(III/2)

250V

Rated surge voltage(III/2)

2.5KV

Item properties

|                      |                               |
|----------------------|-------------------------------|
| Connection direction | 90°                           |
| Type of installation | PCB welding                   |
| Pin arrangement      | Single row in a straight line |
| Pitch                | 3.81mm                        |
| Number of potentials | 4                             |
| Pluggable or not     | Yes                           |
| Number of rows       | 1                             |

Material data

|                             |                                      |
|-----------------------------|--------------------------------------|
| Environmental items         | Compliant with REACH/RoHS            |
| Contact material            | copper                               |
| Contact point metal surface | tin-plated                           |
| Insulation Materials        | High temperature resistant materials |
| Insulating material group   | IIIa                                 |
| Flammability rating         | UL94V-0                              |

Mechanical tests

|                    |                  |
|--------------------|------------------|
| Test Specification | IEC61984/ UL1059 |
|--------------------|------------------|

Environmental data

|                                 |  |
|---------------------------------|--|
| Ambient temperature (operation) | -40°C~130°C(depending on derating curve) |
|---------------------------------|--|

Accessories

Tool

|                |   |
|----------------|---|
| Screwdriver    | / |
| Operating tool | / |

Accessories

|               |   |
|---------------|---|
| Coding strip  | / |
| Bridge        | / |
| Marking strip | / |
| Others        | / |

Business data

|                                     |             |
|-------------------------------------|-------------|
| Order number                        | 10030004197 |
| Packing unit                        |             |
| Minimum order quantity              |             |
| Products weight (without packaging) |             |