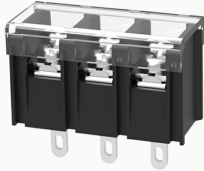


Overview

Product information

**DG48H-B-12040000425**

Single layer PCB fence terminal,nominal current20A.Rated voltage(UL): 300V,Rated cross section:22~12AWG,pitch:9.5mm,Color:black,Contact surface:Tin

Product advantages

- ☑Screw connection for worldwide use
- ☑Screw connection for worldwide use
- ☑Solder board installation, which can realize the electrical connection between the device and the PCB

Product certification

Technical data

Product drawing

3D model

□

Connection capacity

AWG	22~12AWG
Torque	1.2N.m

Electrical parameters UL

Rated voltage (B)	300V
Rated voltage (C)	300V
Rated voltage (D)	300V
Rated current (B)	20A
Rated current (D)	10A
Rated current (C)	20A

Item properties

Type of installation	PCB welding
Pin arrangement	Single row in a straight line
Connection method	Screw connection
Screwdriver	Phillips screwdriver
screw thread	M4
Pitch	9.5mm
Number of potentials	3
Pluggable or not	no
Number of rows	1

Material data

Environmental items	Compliant with REACH/RoHS
Contact material	Copper alloy
Contact point metal surface	tin-plated
Insulation Materials	PA66
Insulating material group	II
Flammability rating	UL94V-0

Mechanical tests

Test Specification	UL1059
--------------------	--------

Environmental data

Ambient temperature (operation)	-40°C~105°C(depending on derating curve)
---------------------------------	--

Accessories

Business data

Order number	12040000425
--------------	-------------

Packing unit	300
Minimum order quantity	/
Products weight (without packaging)	12.311