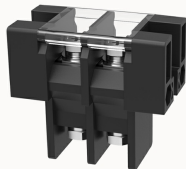


Overview

Product information



DG75-A-12050000214

Up and down transfer terminal, nominal current: 75A. Rated voltage (UL): 600V, rated cross section: 22~4AWG, pitch: 16mm, color: black, contact surface: tin

Product advantages

- ☒ Screw connection for worldwide use
- ☒ Barrier wiring structure, stable and reliable connection
- ☒ It can meet the high current electrical connection at the power end

Product certification



Technical data

Product drawing

3D model

□

Wiring capacity

torque

5N.m

Electrical parameters UL

Rated current (B)

75A

Rated current (C)

75A

Connection capacity

AWG

22~4AWG

Electrical parameters UL

Rated voltage (B)

600V

Rated voltage (C)	600V
Rated voltage (D)	600V
Rated current (D)	5A

Item properties

Type of installation	panel
Pin arrangement	Single row in a straight line
Connection method	Screw connection
Screwdriver	Phillips screwdriver
screw thread	M6
Pitch	16mm
Number of potentials	2
Pluggable or not	no
Number of rows	1

Material data

Environmental items	Compliant with REACH/RoHS
Contact material	copper
Contact point metal surface	Nickel plating
Insulation Materials	PBT
Insulating material group	IIIa
Flammability rating	UL94V-0

Mechanical tests

Test Specification	UL1059
--------------------	--------

Environmental data

Ambient temperature (operation)	-40℃~120℃(depending on derating curve)
---------------------------------	--

Accessories

Business data	
Order number	12050000214
Packing unit	35
Minimum order quantity	/
Products weight (without packaging)	99.6