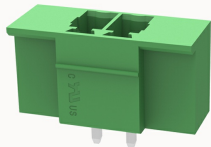


Overview

Product information



15EDGVMG-3.5-10030009828

Pluggable terminal blocks, Rated current: 7A. Rated voltage
(II / 2) : 250V, pitch: 3.5mm, Color: green, Contact surface : Tin

Product advantages

- ☒ PCB welding base
- ☒ Flexible supporting a variety of plugs

Product certification



Technical data

Product drawing

3D model

□

Packaging information

Type of packaging

bag packaging

Electrical parameters UL

Rated voltage (B)	300V
Rated voltage (D)	300V
Rated current (B)	8A
Rated current (D)	8A

Electrical parameters IEC

Rated voltage	250V
Rated current	7A

Rated voltage(II/2)	250V
Rated surge voltage(II/2)	2.5KV

Item properties

Type of installation	PCB welding
Pin arrangement	Single row in a straight line
Pitch	3.5mm
Number of potentials	2
Pluggable or not	Yes
Number of rows	1

Material data

Environmental items	Compliant with REACH/RoHS
Contact material	Copper alloy
Contact zone metal surface	tin-plated
Insulation Materials	PA66
Relative tracking index CTI	600V
Glow Wire Flammability Index GWFI	850
Shell color	green
Insulating material group	I
Flammability rating	UL94V-0

Mechanical tests

Test Specification	IEC61984/ UL1059
--------------------	------------------

Environmental data

Ambient temperature (operation)	-40℃~105℃(depending on derating curve)
---------------------------------	--

Accessories

Tool	
Screwdriver	/
Operating tool	/
Accessories	
Coding strip	15EDG-PWP
Bridge	/
Marking strip	/
Others	/

Business data	
Order number	10030009828
Packing unit	2400
Minimum order quantity	2400
Products weight (without packaging)	0.59375