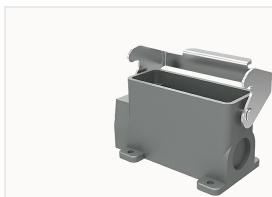


## Overview

### Product information



**D16A-SF-1L-M20-21010000260**

16A Lower base, single buckle, back cover, side entry, M20 Thread hole

### Product advantages

- ☑ Metal or high-strength plastic material, resistant to high-strength mechanical shock;
- ☑ Various installation methods and outlet directions to meet on-site wiring requirements;
- ☑ Snap-in combination structure, dustproof, waterproof, easy operation;

### Product certification

## Technical data

### Product drawing

### 3D model

□

### Marking

classification	Upper Housing/base
Series	A
Type	Surface mount base
Specification	Low structure

### versions

Dimension	16A
locking Category	Single lock
Thread specification	1x M20

### Material characteristics

Flammability rating	V-0
RoHS	conform
Material (upper housing/base)	Die-cast aluminium alloy
Material(upper housing/base)	spray
Color (upper housing/base)	Grey (RAL 7037)
Material (seal)	NBR
Material (lock catch)	Zinc plated

Technical specification

Limiting temperatures	-40℃~+125℃
IP class	IP65

Accessories

Business data

Order number	21010000260
Packing unit	100
Minimum order quantity	1
Products weight (without packaging)	206.4