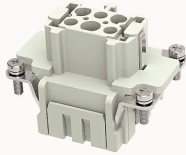


## Overview

## Product information

**DE-006-FS-21020000112**

Heavy-duty insert, Number of contacts: 6+PE, Dimension: 6B, Rated voltage : 500V, Rated current: 16A, Female insert, Cage clamp connector

## Product advantages

- ☑ Spring cage connection technology, high vibration resistance;
- ☑ No special tools required, maintenance-free ;
- ☑ Less materials, easy to manage;
- ☑ With grounding protection.

## Product certification



## Technical data

## Product drawing

## 3D model



## Marking

classification

Insert

Series

DE

## versions

Connection method

Spring cage connection

Female/Male

Female

Dimension

6B

Number of positions

6

PE Contacts

Yes

Material characteristics

Material (insert)	Polycarbonate (PC)
Materia (Contact)	Copper alloy
Surface (Contact)	Silver plated
Flammability rating	V-0
color	Grey/White (RAL 7032)
RoHS	Comply with RoHS exemptions

Electrical parameters

Rated current	16A
	500V
Rated pulse voltage	6KV
Pollution level	3
On the basis of UL /CSARated current	600V
Insulation resistance	≥10000MΩ
Contact resistance	≤1mΩ
Temperature range	-40℃~+125℃
working life-mating cycles	≥500 time
Strip length	7-9mm
Conductor cross sections (mm²)	0.14-2.5mm²
Conductor cross sections(AWG)	26-14AWG

Standards

Connection meets standards	DIN EN 60664 DIN EN 61984
----------------------------	---------------------------

Accessories

Accessories

Slotted Screwdriver

/

#### Business data

Order number	21020000112
Packing unit	100
Minimum order quantity	5
Products weight (without packaging)	50.81