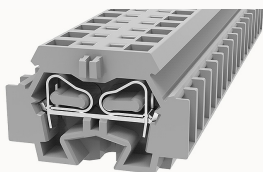


## Overview

### Product information



## WS4-DB-11030000281

Spring-cage type Din-Rail TB, connector method: Spring-cage/plug-in connector, Rated voltage: 630 V, Rated current: 32 A, Number of connectors: 2, Number of potentials: 1, Cross section: 0.2 mm<sup>2</sup> - 4 mm<sup>2</sup>, AWG: 28 - 12, Width: 7 mm, Color: gray, Mounting type: Panel installation

### Product advantages

- ☑ spring-cage connection technology, good anti-vibration performance;
- ☑ Use an ordinary flat-blade screwdriver, you can easily wire and take the wire;
- ☑ Panel installation, no need to install on the guide rail;
- ☑ Can be matched with marker strips to avoid incorrect insertion of wires.

### Product certification



## Technical data

### Product drawing

### 3D model

□

### Overview

Connection method	spring-cage connection
Number of rows	1
number of connections	2
Open-end side panels	Yes
Insulation Materials	PA
Flame retardant grade, in line with UL 94	V0
Insulating material group	I

standard test	IEC60947-7-1
---------------	--------------

#### Dimension

width	7mm
End plate width	2.5mm
Height	23mm
length	33.4mm

#### Wiring data

Strip length	10~12mm
Conductor cross section solid AWG	28~12
Conductor cross section solid	0.2~4mm <sup>2</sup>
Conductor cross section flexible	0.2~4mm <sup>2</sup>
Conductor cross section flexible (ferrule without plastic sleeve)	0.2~4mm <sup>2</sup>
Conductor cross section flexible (ferrule with plastic sleeve)	0.2~4mm <sup>2</sup>
2 flexible conductors with a TWIN ferrule	0.5~1mm <sup>2</sup>

#### IEC Electrical parameters

Rated voltage (III / 3)	630V
Rated current (III / 3)	32A
Rated surge voltage	8KV

#### UL Electrical parameters

Rated voltage	300V
Rated current	20A

#### Environmental conditions

Ambient temperature (operation)	-40 °C ~ 105 °C (depending on derating curve)
Relative humidity (storage/transport)	25%~75%

Ambient temperature (storage / transport)	-25℃~60℃
Mechanical performance test	
Mechanical strength	Passed the test
Fixing support	Passed the test
Rotational Pull Test	Passed the test
Electrical performance test	
Voltage drop	≤3.2mV
Temperature rise test	≤45 K
Safety test	
Anti-finger touch	Passed the test
Environmental protection	
RoHS	No excessive harmful substances
REACH SVHC	Lead 7439-92-1

## Accessories

### Marker

Top marker	/
Side marker	DEK6
Marker support	/
Warning cover	/

### Accessories

Slotted screwdriver size (Blade thickness x Width)	0.5×3.5
Adjacent jumper (2P)	/
Alternate jumper (2P)	/
Staggered jumper (2P)	/

End cover	D-WS4-DB
-----------	----------

#### Installation

DIN rail mounting adapter	WHH-WS1.5-DB
End clamp	E-WS N / E-PC-1100A
Terminal strip marker support	KLM3-20x8 / KLM3-44x8 / DBE-1 / DBE-2
DIN rail	NS35/7.5-1000-00A(H)

#### Marking & Installation

Marking strip	DEK6
---------------	------

#### Accessories

End cover	D-WS4-DB
Rail adapter	WHH-WS1.5-DB

#### Business data

Order number	11030000281
Packing unit	100
Minimum order quantity	100
Products weight (without packaging)	4.101