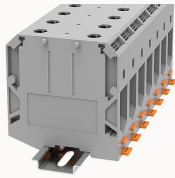


## Overview

## Product information

**PC95-11010000112**

Screw type Din-Rail TB, connector method: Screw/plug-in connector, Rated voltage: 1000 V, Rated current: 232 A, Number of connectors: 2, Number of potentials: 1, Cross section: 25 mm<sup>2</sup> - 95 mm<sup>2</sup>, AWG: 2 - 4/0, Width: 25 mm, Color: gray, Mounting type: NS 35/7.5, NS 35/15

## Product advantages

- ☑ Screw connection technology, reliable connection;
- ☑ Equipped with fixed parts and bridge parts, circuit connection test is more flexible;
- ☑ Copper alloy material, good corrosion resistance;
- ☑ Can be matched with marker strips to avoid incorrect insertion of wires.

## Product certification



## Technical data

## Product drawing

## 3D model



## Overview

Number of rows	1
number of connections	2
Open-end side panels	no
Insulation Materials	PA
Flame retardant grade, in line with UL 94	V0
Insulating material group	I
standard test	IEC60947-7-1
Connection method	screw connection

## Dimension

width	25mm
End plate width	/
Height	90mm
NS 35/7,5 Height	90.04mm
NS 35/15 Height	97.54mm
length	83mm

## Wiring data

Conductor cross section solid AWG	2~4/0
Conductor cross section solid	25~95mm <sup>2</sup>
Conductor cross section flexible	25~95mm <sup>2</sup>
Conductor cross section flexible (ferrule without plastic sleeve)	25~95mm <sup>2</sup>
Conductor cross section flexible (ferrule with plastic sleeve)	25~95mm <sup>2</sup>
2 flexible conductors with a TWIN ferrule	25~35mm <sup>2</sup>
Strip length	31~33mm
Screw type	Allen screws
screw thread	M8
Tightening torque	25N.m

## IEC Electrical parameters

Rated voltage (III / 3)	1000V
Rated current (III / 3)	232A
Rated surge voltage	8KV

## UL Electrical parameters

Rated voltage	600V
---------------	------

Rated current	230A
---------------	------

#### Environmental conditions

Ambient temperature (operation)	-40 °C ~ 105 °C（depending on derating curve）
Relative humidity (storage/transport)	25%~75%
Ambient temperature (storage / transport)	-25℃~60℃

#### Mechanical performance test

Mechanical strength	Passed the test
Fixing support	Passed the test
Rotational Pull Test	Passed the test

#### Electrical performance test

Voltage drop	≤3.2mV
Temperature rise test	≤45 K

#### Safety test

Anti-finger touch	Passed the test
-------------------	-----------------

#### Environmental protection

RoHS	No excessive harmful substances
REACH SVHC	Lead 7439-92-1

#### Accessories

#### Accessories

Slotted screwdriver size (Blade thickness x Width)	Hex key 6mm
Fixed bridge	/
Insertion bridge	/
End cover	/
Separating disk	/

Partition plate	/
-----------------	---

#### Marker

Top marker	/
Marker	ZT12
Marker support	/

#### Installation

End clamp	E-WS N / E-PC-1100A
Terminal strip marker support	KLM3-20x8 / KLM3-44x8 / DLM2 / DBE-1 / DBE-2
DIN rail	NS35/7.5 & NS35/15

#### Marking & Installation

Marking strip	ZB10
Marker cards	DBE-1

#### Accessories

End clamp	E-WS
DIN rail	NS35/7.5-1000-00A(H)

#### Business data

Order number	11010000112
Packing unit	20
Minimum order quantity	20
Products weight (without packaging)	209.95