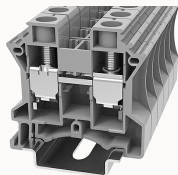


Overview

Product information



DC16-11020000012

Screw type Din-Rail TB, connector method: Screw/plug-in connector, Rated voltage: 1000 V, Rated current: 76 A, Number of connectors: 2, Number of potentials: 1, Cross section: 1.5 mm² - 25 mm², AWG: 14 - 3, Width: 12 mm, Color: gray, Mounting type: NS 35/7.5, NS 35/15

Product advantages

- ☑ Steel screw connection technology, reliable connection;
- ☑ Equipped with dual-channel bridge wells, circuit connection testing is more flexible;
- ☑ Unique plug-in bridge, high circuit connection efficiency;
- ☑ The box has a baffle to prevent mis-insertion;
- ☑ Can be matched with marker strips to avoid incorrect insertion of wires.

Product certification



Technical data

Product drawing

3D model

□

Overview

Number of rows	1
number of connections	2
Open-end side panels	Yes
Insulation Materials	PA
Flame retardant grade, in line with UL 94	V0
Insulating material group	I
standard test	IEC60947-7-1

Connection method	screw connection
-------------------	------------------

Dimension

width	12mm
End plate width	1.5mm
Height	49.4mm
NS 35/7,5 Height	50.9mm
NS 35/15 Height	58.4mm
length	50.25mm

Wiring data

Strip length	12mm
Conductor cross section solid AWG	14~3
Conductor cross section solid	1.5~25mm ²
Conductor cross section flexible	1.5~25mm ²
Conductor cross section flexible (ferrule without plastic sleeve)	1-16mm ²
Conductor cross section flexible (ferrule with plastic sleeve)	1-16mm ²
2 flexible conductors with a TWIN ferrule	0.75-6mm ²
Screw type	Slotted screw
screw thread	M5
Tightening torque	2.5N.m

IEC Electrical parameters

Rated voltage (III / 3)	1000V
Rated current (III / 3)	76A
Rated surge voltage	8KV

UL Electrical parameters

Rated voltage	600V
Rated current	100A

Environmental conditions

Ambient temperature (operation)	-40 °C ~ 105 °C (depending on derating curve)
Relative humidity (storage/transport)	25%~75%
Ambient temperature (storage / transport)	-25℃~60℃

Mechanical performance test

Mechanical strength	Passed the test
Fixing support	Passed the test
Rotational Pull Test	Passed the test

Electrical performance test

Voltage drop	≤3.2mV
Temperature rise test	≤45 K

Safety test

Anti-finger touch	Passed the test
-------------------	-----------------

Environmental protection

RoHS	No excessive harmful substances
REACH SVHC	Lead 7439-92-1

Accessories

Marker

Top marker	/
Side marker	ZT12
Marker support	/

Accessories

Slotted screwdriver size (Blade thickness x Width)	1×6.5
Bridge	DFA16
End cover	D-DC16
Partition plate	/

Installation

End clamp	E-WS N / E-PC-1100A
Terminal strip marker support	KLM3-20x8 / KLM3-44x8 / DLM2 / DBE-1 / DBE-2
DIN rail	NS35/7.5 & NS35/15

Marking & Installation

Marking strip	ZB10
Marker cards	DBE-1

Accessories

End cover	D-DC16
Bridge	DFA16
End clamp	E-WS
DIN rail	NS35/7.5-1000-00A(H)

Business data

Order number	11020000012
Packing unit	20
Minimum order quantity	20
Products weight (without packaging)	25.974