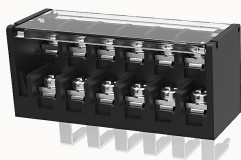


## Overview

### Product information



### DG24-3-B-12060000029

Double-layer barrier terminal blocks, Rated current: 15A. Rated voltage (UL) : 300V, Cross section: 22~14AWG, pitch: 7.62mm, Color: black, Contact surface: Tin

### Product advantages

- ☒ Screw connection for worldwide use
- ☒ Fence type wiring structure, stable and reliable connection
- ☒ Used in industrial control field to save equipment installation space

### Product certification

## Technical data

### Product drawing

### 3D model

### Processing notes

Process

Wave soldering/manual soldering

### Connection capacity

AWG

22~14AWG

Torque

0.5N.m

### Electrical parameters UL

Rated voltage (B)

300V

Rated voltage (D)

300V

Rated current (B)

15A

Rated current (D)

10A

### Item properties

Type of installation	PCB welding
Pin arrangement	Double-row of misalignment
Connection method	Screw connection
Screwdriver	slotted-phillips screwdriver
screw thread	M3
Pitch	7.62mm
Number of potentials	12
Pluggable or not	no
Number of rows	2

Material data

Environmental items	Compliant with REACH/RoHS
Contact material	Copper alloy
Contact point metal surface	tin-plated
Insulation Materials	PA66
Insulating material group	II
Flammability rating	UL94V-0

Mechanical tests

Test Specification	UL1059
--------------------	--------

Environmental data

Ambient temperature (operation)	-40°C~105°C(depending on derating curve)
---------------------------------	--

Accessories

Accessories

--	--

Business data

Order number	12060000029
Packing unit	80
Minimum order quantity	/
Products weight (without packaging)	40.8