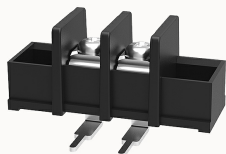


## Overview

### Product information



## DG35R-A-12020000745

Single-layer PCB barrier terminal blocks, Rated current: 20A. Rated voltage (UL): 300V, Cross section: 22~12AWG, pitch: 8.25mm, Color: black, Contact surface: Tin

### Product advantages

- ☒ Screw connection for worldwide use
- ☒ Fence type wiring structure, stable and reliable connection
- ☒ Solder plate mounting for electrical connection of the device to the PCB

### Product certification



## Technical data

### Product drawing

### 3D model

□

### Processing notes

Process

Wave soldering/manual soldering

### Connection capacity

AWG

22~12AWG

Torque

0.5N.m

### Electrical parameters UL

Rated voltage (B)

300V

Rated voltage (D)

300V

Rated current (B)

20A

Rated current (D)	10A
-------------------	-----

#### Electrical parameters IEC

Rated current	300V
	32A

#### Item properties

Type of installation	PCB welding
Pin arrangement	Single row in a straight line
Connection method	Screw connection
Screwdriver	slotted-phillips screwdriver
screw thread	M3
Pitch	8.25mm
Number of potentials	2
Pluggable or not	no
Number of rows	1

#### Material data

Environmental items	Compliant with REACH/RoHS
Contact material	Copper alloy
Contact point metal surface	tin-plated
Insulation Materials	PA66
Insulating material group	I
Flammability rating	UL94V-0

#### Mechanical tests

Test Specification	UL1059
--------------------	--------

#### Environmental data

Ambient temperature (operation)	-40℃~105℃(depending on derating curve)
---------------------------------	--

Accessories

Accessories

Business data	
Order number	12020000745
Packing unit	100
Minimum order quantity	/
Products weight (without packaging)	6.6666666666667