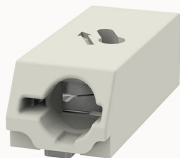


Overview

Product information



DG2003-6.0-10060000597

PCB spring terminal blocks, Rated current: 17.5A. Rated voltage
(III/2) : 200V, pitch: 6.0mm, Color: White, Contact surface : Tin

Product advantages

- ☑ PUSH-IN connection technology, fast wiring
- ☑ Suitable for SMT welding process
- ☑ Compact structure, saving installation space

Product certification



Technical data

Product drawing

3D model

□

Processing notes

Process

Reflow soldering/wave soldering/manual soldering

Connection capacity

Conductor cross section solid

0.5~1.5mm²

Conductor cross section flexible

0.5~1.5mm²

AWG

20~16AWG

Strip length

10mm

Electrical parameters UL

Rated voltage (B)

300V

Rated current (B)

10A

Electrical parameters IEC

Rated voltage	200V
Rated voltage(III/3)	200V
Rated current	17.5A
Rated voltage(III/2)	200V
Rated voltage(II/2)	320V
Rated surge voltage(III/3)	4KV
Rated surge voltage(III/2)	4KV
Rated surge voltage(II/2)	4KV

Item properties

Connection direction	0°
Type of installation	PCB welding
Pin arrangement	Double-row in a straight line
Connection method	Push-in spring connection
Pitch	6mm
Number of potentials	1
Pluggable or not	no
Number of rows	1

Material data

Environmental items	Compliant with REACH/RoHS
Contact material	Copper alloy
Contact point metal surface	tin-plated
Insulation Materials	High temperature resistant materials
Insulating material group	IIIa

Flammability rating	UL94V-0
Mechanical tests	
Test Specification	IEC60947/UL1977
Environmental data	
Ambient temperature (operation)	-40℃~130℃(depending on derating curve)

Accessories

Accessories

Coding strip	/
Bridge	/
Marking strip	/
Others	/

Tool

Operating tool	/
Screwdriver	/

Business data

Order number	10060000597
Packing unit	900
Minimum order quantity	30
Products weight (without packaging)	1