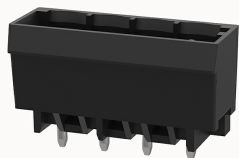


## Overview

### Product information



### 8EDGVC-THR-5.0 Reel package-10030003810

Pluggable terminal blocks, Rated current: 20A. Rated voltage  
(III/3) : 320V, pitch: 5.0mm, Color: gray, Contact surface : Tin

### Product advantages

- ☒ Suitable for SMT welding process
- ☒ The plug direction is perpendicular to PCB, Can meet the needs of different connectors

### Product certification



## Technical data

### Product drawing

### 3D model

□

### Processing notes

Process

Reflow soldering/wave soldering/manual soldering

### Electrical parameters UL

Rated voltage (B)	300V
Rated voltage (D)	300V
Rated current (B)	15A
Rated current (D)	10A

### Electrical parameters IEC

Rated voltage	320V
Rated voltage(III/3)	320V

Rated current	20A
Rated surge voltage(III/3)	4KV

Item properties

Connection direction	90°
Type of installation	PCB welding
Pin arrangement	Single row in a straight line
Pitch	5mm
Number of potentials	4
Pluggable or not	Yes
Number of rows	1

Material data

Environmental items	Compliant with REACH/RoHS
Contact material	copper
Contact point metal surface	tin-plated
Contact zone metal surface	tin-plated
Insulation Materials	High temperature resistant materials
Insulating material group	IIIa
Flammability rating	UL94V-0

Mechanical tests

Test Specification	IEC61984/ UL1059
--------------------	------------------

Environmental data

Ambient temperature (operation)	-40℃~130℃(depending on derating curve)
---------------------------------	--

Accessories

Tool
------

Screwdriver	/
Operating tool	/

Accessories

Coding strip	DG014
Bridge	/
Marking strip	/
Others	/

Business data

Order number	10030003810
Packing unit	140
Minimum order quantity	30
Products weight (without packaging)	1.8