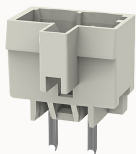


Overview

Product information



8EDGVCB-5.0-10030002945

Pluggable terminal blocks, Rated current: 20A. Rated voltage
(III/3) : 320V, pitch: 5.0mm, Color: gray, Contact surface : Tin

Product advantages

- ☒ Universal installation method to ensure a high degree of flexibility in device design
- ☒ The plug direction is perpendicular to PCB

Product certification



Technical data

Product drawing

3D model

□

Processing notes

Process

Wave soldering/manual soldering

Electrical parameters UL

Rated voltage (B)	300V
Rated voltage (D)	300V
Rated current (B)	15A
Rated current (D)	10A

Electrical parameters IEC

Rated voltage	320V
Rated voltage(III/3)	320V

Rated current	20A
Rated surge voltage(III/3)	4KV

Item properties

Connection direction	90°
Type of installation	PCB welding
Pin arrangement	Single row in a straight line
Pitch	5mm
Number of potentials	2
Pluggable or not	Yes
Number of rows	1

Material data

Environmental items	Compliant with REACH/RoHS
Contact material	copper
Contact point metal surface	tin-plated
Contact zone metal surface	tin-plated
Insulation Materials	PA66
Insulating material group	I
Flammability rating	UL94V-0

Mechanical tests

Test Specification	IEC61984/ UL1059
--------------------	------------------

Environmental data

Ambient temperature (operation)	-40℃~105℃(depending on derating curve)
---------------------------------	--

Accessories

Tool

Screwdriver	/
Operating tool	/

Accessories

Coding strip	DG014
Bridge	/
Marking strip	/
Others	/

Business data

Order number	10030002945
Packing unit	1600
Minimum order quantity	30
Products weight (without packaging)	0.8