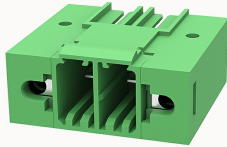


Overview

Product information



**5EDGRHM-7.62-10020002498**

Pluggable terminal blocks, Rated current: 41A. Rated voltage  
(III/2) : 630V, pitch: 7.62mm, Color: green, Contact surface : Tin

Product advantages

- ☑ Universal installation method to ensure a high degree of flexibility in device design
- ☑ The plug direction is parallel to the PCB

Product certification



Technical data

Product drawing

3D model

□

Processing notes

Process	Wave soldering/manual soldering
---------	---------------------------------

Electrical parameters UL

Rated voltage (B)	300V
Rated voltage (C)	150V
Rated voltage (D)	150V
Rated current (B)	41A
Rated current (D)	15A
Rated current (C)	41A

Electrical parameters IEC

Rated voltage	630V
Rated voltage(III/3)	630V
Rated current	41A
Rated voltage(III/2)	630V
Rated voltage(II/2)	1000V
Rated surge voltage(III/3)	6KV
Rated surge voltage(III/2)	6KV
Rated surge voltage(II/2)	6KV

#### Item properties

Connection direction	0°
Type of installation	PCB welding
Pin arrangement	Three rows in a straight line
Pitch	7.62mm
Number of potentials	2
Pluggable or not	Yes
Number of rows	1

#### Material data

Environmental items	Compliant with REACH/RoHS
Contact material	copper
Contact point metal surface	tin-plated
Insulation Materials	PA66
Insulating material group	I
Flammability rating	UL94V-0

#### Mechanical tests

Test Specification	IEC61984/ UL1059
--------------------	------------------

Environmental data

Ambient temperature (operation)	-40°C~125°C(depending on derating curve)
---------------------------------	--

Accessories

Tool

Screwdriver	/
Operating tool	/

Accessories

Coding strip	/
Bridge	/
Marking strip	/
Others	5EDG-PWI

Business data

Order number	10020002498
Packing unit	240
Minimum order quantity	30
Products weight (without packaging)	7.92