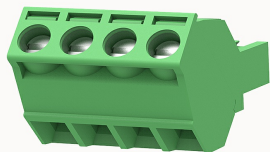


Overview

Product information



2EDGKL-5.08-10010002538

Pluggable terminal blocks, Rated current: 20A. Rated voltage
(III/2) : 320V, pitch: 5.08mm, Color: green, Contact surface : Tin

Product advantages

- ☑ Adapt to multi-type sockets, device design is highly flexible
- ☑ Keying parts can be installed
- ☑ Universal installation method, suitable for various situations

Product certification



Technical data

Product drawing

3D model

□

Connection capacity

Conductor cross section solid	1.0~2.5mm ²
Conductor cross section flexible	1.0~2.5mm ²
AWG	24~12AWG
Torque	0.4N.m
Strip length	10mm

Electrical parameters UL

Rated voltage (B)	300V
Rated voltage (D)	300V
Rated current (B)	10A

Rated current (D)	10A
-------------------	-----

Electrical parameters IEC

Rated voltage	320V
Rated current	20A
Rated voltage(III/2)	320V
Rated surge voltage(III/2)	2KV

Item properties

Connection direction	45°
Pin arrangement	Single row in a straight line
Connection method	Screw connection
Screwdriver	Slotted screwdriver
screw thread	M2.5
Pitch	5.08mm
Number of potentials	4
Pluggable or not	Yes
Number of rows	1

Material data

Environmental items	Compliant with REACH/RoHS
Contact material	Copper alloy
Contact point metal surface	tin-plated
Contact zone metal surface	tin-plated
Insulation Materials	PA66
Insulating material group	I
Flammability rating	UL94V-0

Mechanical tests

Test Specification	IEC61984/ UL1059
Environmental data	
Ambient temperature (operation)	-40℃~105℃(depending on derating curve)

Accessories	
Tool	
Screwdriver	0.6x3.5, Slotted screwdriver
Operating tool	/
Accessories	
Coding strip	2EDG-PWI
Bridge	DG019-5.0
Marking strip	/
Others	/

Business data	
Order number	10010002538
Packing unit	100
Minimum order quantity	30
Products weight (without packaging)	7.5