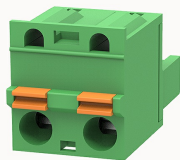


Overview

Product information



2EDGKD-7.62-10020000640

Pluggable terminal blocks, Rated current: 20A. Rated voltage
(III/2) : 400V, pitch: 7.62mm, Color: green, Contact surface : Tin

Product advantages

- ☒ Adapt to multi-type sockets, device design is highly flexible
- ☒ Keying requirements can be met
- ☒ Universal installation method, suitable for various situations

Product certification



Technical data

Product drawing

3D model

□

Connection capacity

Conductor cross section solid	0.2~2.5mm ²
Conductor cross section flexible	0.2~2.5mm ²
AWG	26~12AWG
Strip length	10mm

Electrical parameters UL

Rated voltage (B)	300V
Rated voltage (D)	300V
Rated current (B)	10A
Rated current (D)	10A

Electrical parameters IEC

Rated voltage	400V
Rated voltage(III/3)	400V
Rated current	20A
Rated voltage(III/2)	400V
Rated voltage(II/2)	1000V
Rated surge voltage(III/3)	4KV
Rated surge voltage(III/2)	4KV
Rated surge voltage(II/2)	6KV

Item properties

Connection direction	0°
Connection method	Push-in spring connection
Pitch	7.62mm
Number of potentials	2
Pluggable or not	Yes
Number of rows	1

Material data

Environmental items	Compliant with REACH/RoHS
Contact material	Copper alloy
Contact point metal surface	tin-plated
Contact zone metal surface	tin-plated
Insulation Materials	PA66
Insulating material group	I
Flammability rating	UL94V-0

Mechanical tests

Test Specification	IEC61984/ UL1059
--------------------	------------------

Environmental data

Ambient temperature (operation)	-40°C~105°C(depending on derating curve)
---------------------------------	--

Accessories

Accessories

Coding strip	/
--------------	---

Bridge	/
--------	---

Marking strip	/
---------------	---

Others	2EDG-PWI
--------	----------

Tool

Operating tool	/
----------------	---

Screwdriver	/
-------------	---

Business data

Order number	10020000640
--------------	-------------

Packing unit	910
--------------	-----

Minimum order quantity	30
------------------------	----

Products weight (without packaging)	5.6
-------------------------------------	-----