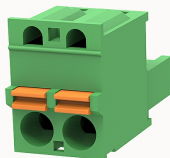


## Overview

### Product information



**2EDGKD-5.0-10020000555**

Pluggable terminal blocks, Rated current: 20A. Rated voltage  
(III/2) : 320V, pitch: 5.0mm, Color: green, Contact surface : Tin

### Product advantages

- ☑ Adapt to multi-type sockets, device design is highly flexible
- ☑ Keying requirements can be met
- ☑ Universal installation method, suitable for various situations

### Product certification



## Technical data

### Product drawing

### 3D model

□

### Connection capacity

|                                  |                        |
|----------------------------------|------------------------|
| Conductor cross section solid    | 0.2~2.5mm <sup>2</sup> |
| Conductor cross section flexible | 0.2~2.5mm <sup>2</sup> |
| AWG                              | 26~12AWG               |
| Strip length                     | 10mm                   |

### Electrical parameters UL

|                   |      |
|-------------------|------|
| Rated voltage (B) | 300V |
| Rated voltage (D) | 300V |
| Rated current (B) | 10A  |
| Rated current (D) | 10A  |

Electrical parameters IEC

|                            |      |
|----------------------------|------|
| Rated voltage              | 320V |
| Rated current              | 20A  |
| Rated voltage(III/2)       | 320V |
| Rated surge voltage(III/2) | 4KV  |

Item properties

|                      |                           |
|----------------------|---------------------------|
| Connection direction | 0°                        |
| Connection method    | Push-in spring connection |
| Pitch                | 5mm                       |
| Number of potentials | 2                         |
| Pluggable or not     | Yes                       |
| Number of rows       | 1                         |

Material data

|                             |                           |
|-----------------------------|---------------------------|
| Environmental items         | Compliant with REACH/RoHS |
| Contact material            | Copper alloy              |
| Contact point metal surface | tin-plated                |
| Contact zone metal surface  | tin-plated                |
| Insulation Materials        | PA66                      |
| Insulating material group   | I                         |
| Flammability rating         | UL94V-0                   |

Mechanical tests

|                    |                  |
|--------------------|------------------|
| Test Specification | IEC61984/ UL1059 |
|--------------------|------------------|

Environmental data

|                                 |  |
|---------------------------------|--|
| Ambient temperature (operation) | -40℃~105℃(depending on derating curve) |
|---------------------------------|--|

## Accessories

### Accessories

|               |          |
|---------------|----------|
| Coding strip  | /        |
| Bridge        | /        |
| Marking strip | /        |
| Others        | 2EDG-PWI |

### Tool

|                |   |
|----------------|---|
| Operating tool | / |
| Screwdriver    | / |

## Business data

|                                     |             |
|-------------------------------------|-------------|
| Order number                        | 10020000555 |
| Packing unit                        | 200         |
| Minimum order quantity              | 30          |
| Products weight (without packaging) | 3.3         |