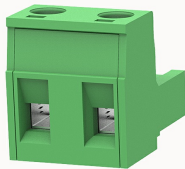


Overview

Product information



2EDGK-7.5-10010001546

Pluggable terminal blocks, Rated current: 20A. Rated voltage
(III/2) : 400V, pitch: 7.5mm, Color: green, Contact surface : Tin

Product advantages

- ☑ Adapt to multi-type sockets, device design is highly flexible
- ☑ Keying requirements can be met
- ☑ Universal installation method, suitable for various situations

Product certification



Technical data

Product drawing

3D model

□

Connection capacity

| | |
|----------------------------------|------------------------|
| Conductor cross section solid | 1.0~2.5mm ² |
| Conductor cross section flexible | 1.0~2.5mm ² |
| AWG | 28~12AWG |
| Torque | 0.5N.m |
| Strip length | 7mm |

Electrical parameters UL

| | |
|-------------------|------|
| Rated voltage (B) | 300V |
| Rated voltage (D) | 300V |
| Rated current (B) | 15A |

| | |
|-------------------|-----|
| Rated current (D) | 10A |
|-------------------|-----|

Electrical parameters IEC

| | |
|----------------------------|------|
| Rated voltage | 400V |
| Rated current | 20A |
| Rated voltage(III/2) | 400V |
| Rated surge voltage(III/2) | 4KV |

Item properties

| | |
|----------------------|---------------------|
| Connection direction | 0° |
| Connection method | Screw connection |
| Screwdriver | Slotted screwdriver |
| screw thread | M3 |
| Pitch | 7.5mm |
| Number of potentials | 2 |
| Pluggable or not | Yes |
| Number of rows | 1 |

Material data

| | |
|-----------------------------|---------------------------|
| Environmental items | Compliant with REACH/RoHS |
| Contact material | Copper alloy |
| Contact point metal surface | tin-plated |
| Contact zone metal surface | tin-plated |
| Insulation Materials | PA66 |
| Insulating material group | I |
| Flammability rating | UL94V-0 |

Mechanical tests

| | |
|--------------------|------------------|
| Test Specification | IEC61984/ UL1059 |
|--------------------|------------------|

Environmental data

Ambient temperature (operation)

-40°C~105°C(depending on derating curve)

Accessories

Tool

| | |
|----------------|------------------------------|
| Screwdriver | 0.6x3.5, Slotted screwdriver |
| Operating tool | / |

Accessories

| | |
|---------------|----------|
| Coding strip | 2EDG-PWI |
| Bridge | / |
| Marking strip | / |
| Others | / |

Business data

| | |
|-------------------------------------|-------------|
| Order number | 10010001546 |
| Packing unit | 200 |
| Minimum order quantity | 30 |
| Products weight (without packaging) | 3.745 |