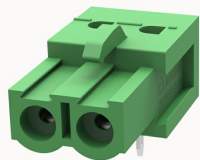


## Overview

### Product information



## 2EDGA-5.08-10020000505

Pluggable terminal blocks, Rated current: 20A. Rated voltage (III/2) : 320V, pitch: 5.08mm, Color: green, Contact surface : Tin

### Product advantages

- ☒ PCB welding, plug direction is parallel to the PCB
- ☒ Multiple contacts to provide touch protection for connection

### Product certification



## Technical data

### Product drawing

### 3D model

□

### Processing notes

Process

Wave soldering/manual soldering

### Electrical parameters UL

Rated voltage (B)	300V
Rated voltage (D)	300V
Rated current (B)	15A
Rated current (D)	10A

### Electrical parameters IEC

Rated voltage	320V
Rated current	20A

Rated voltage(III/2)	320V
Rated surge voltage(III/2)	4KV

#### Item properties

Connection direction	0°
Type of installation	PCB welding
Pin arrangement	Double-row in a straight line
Pitch	5.08mm
Number of potentials	2
Pluggable or not	Yes
Number of rows	1

#### Material data

Environmental items	Compliant with REACH/RoHS
Contact material	Copper alloy
Contact zone metal surface	tin-plated
Insulation Materials	PA66
Insulating material group	I
Flammability rating	UL94V-0

#### Mechanical tests

Test Specification	IEC61984/ UL1059
--------------------	------------------

#### Environmental data

Ambient temperature (operation)	-40℃~105℃(depending on derating curve)
---------------------------------	--

#### Accessories

##### Accessories

Coding strip	/
--------------	---

Bridge	/
Marking strip	/
Others	/

Tool

Operating tool	/
Screwdriver	/

Business data

Order number	10020000505
Packing unit	1450
Minimum order quantity	30
Products weight (without packaging)	1.595